

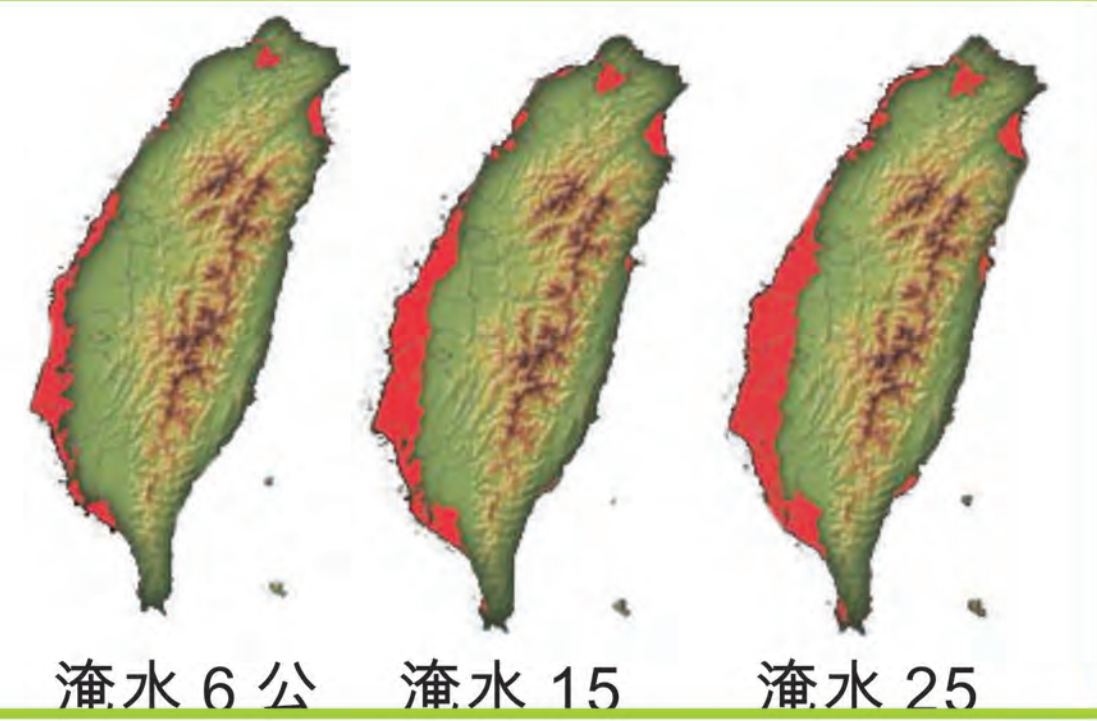
City Filter

張詩唯 曾盈瑞

Exacerbate Global



全球暖化帶動海水上升後，台灣本島逐漸[泡]在水裡的模擬空照圖。本世紀末，台南將徹底淹沒，

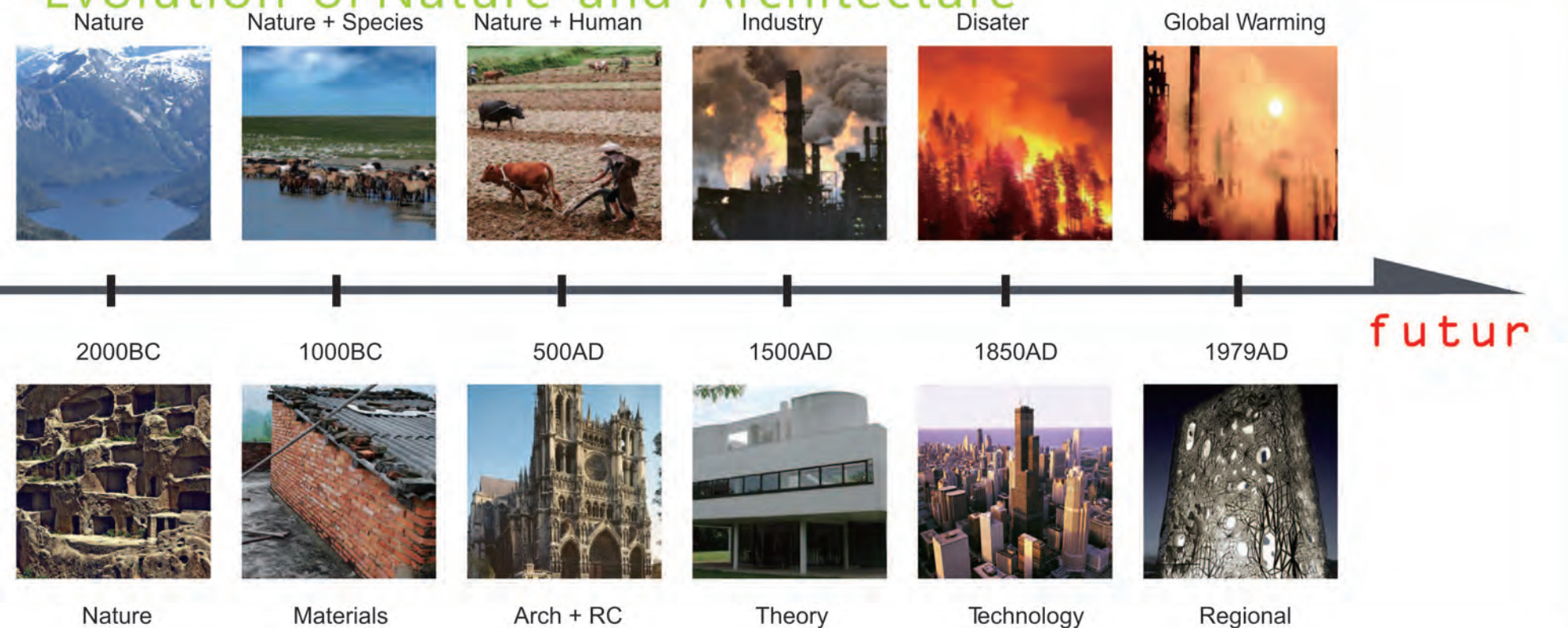


Air Pollution



High-Urbanization, Green

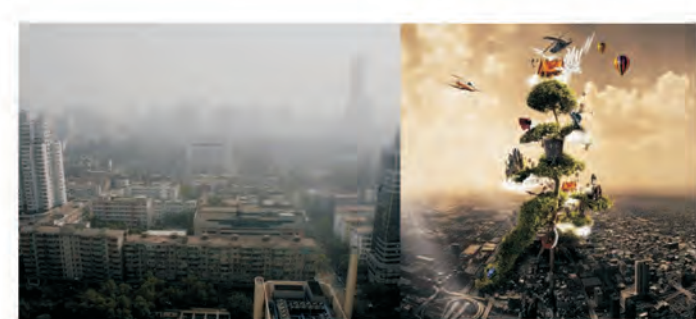
Evolution of Nature and Architecture



Information



設計流程架



都市化下·綠地減少
High - Urbanization Green Reduction



空氣汙染問題
Air Pollution



全球暖化加劇
Exacerbate Global Warming



資訊化社會
Information Society

都市環境失調

置入City

Goal

目標

- a. 空氣汙染之過濾
建立新的空氣循環模
- b. 都市熱現象之再利用
人為空間與自然環境之整
- c. 資訊
資訊題供與塞選
- D. 自然、建築、都市
人為空間與自然環境整合低汙染的生活模式
- E. 人的分流
使用者與空間

綠 × 都
網 × 市

捷運整合空間

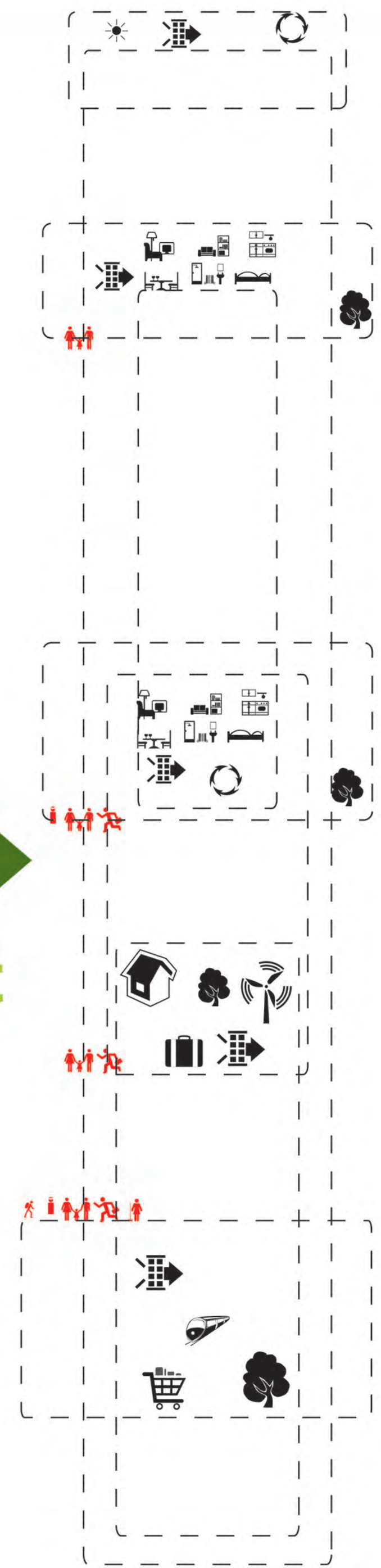
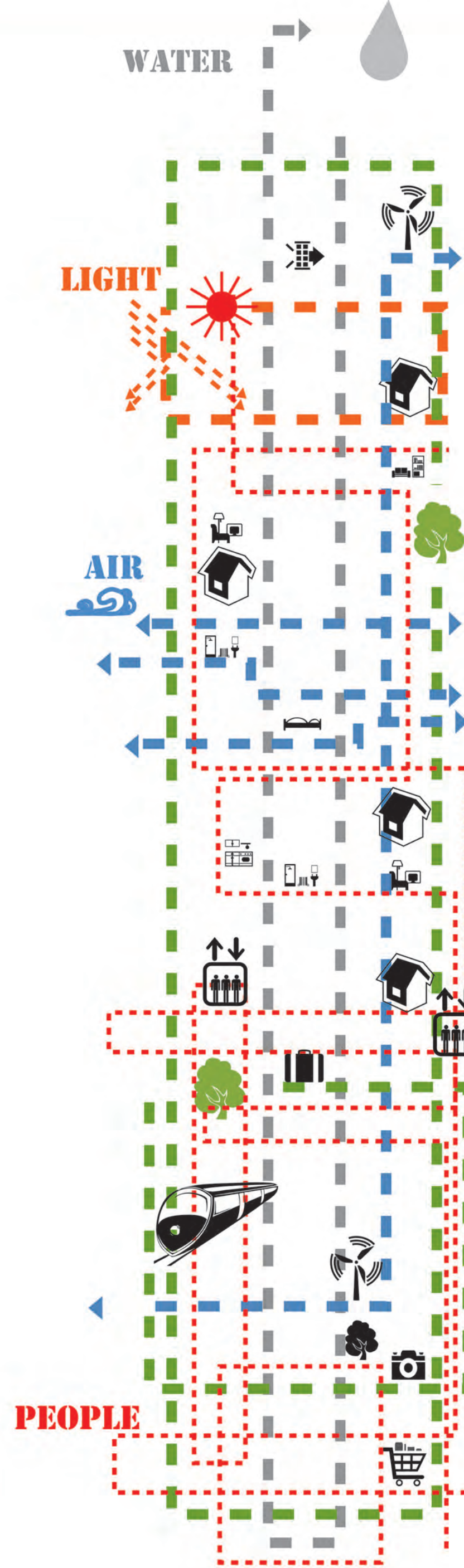
由低碳系統出發，整合都市移動方式，達到減碳之效果
構成巨型都市過濾器
開放之都市空間
資訊展出示範之概念與宣傳
進一步推展到其他捷運站

生活

概念住宅

利用生物性仿生作用濾淨空氣髒汙
熱能吸收利用
自然資源利用與歸還
都市中大樹一般的住宅 自然與住的可能性

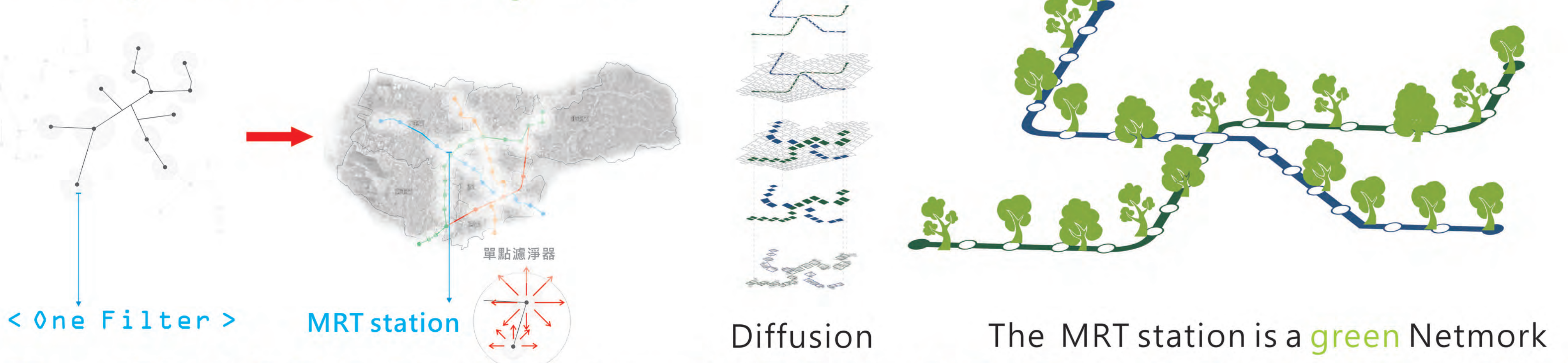
What is City Filter



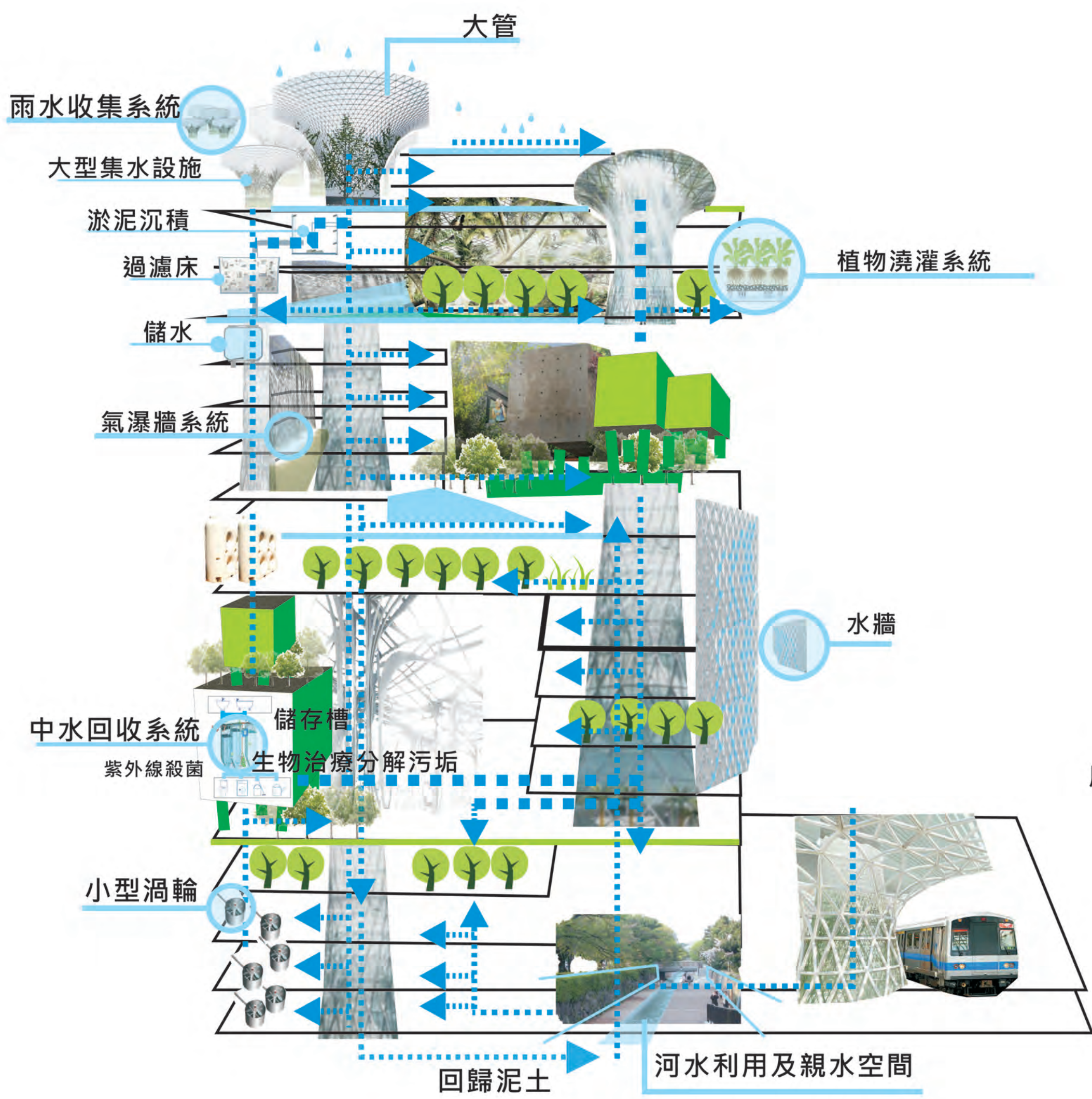
Site Location



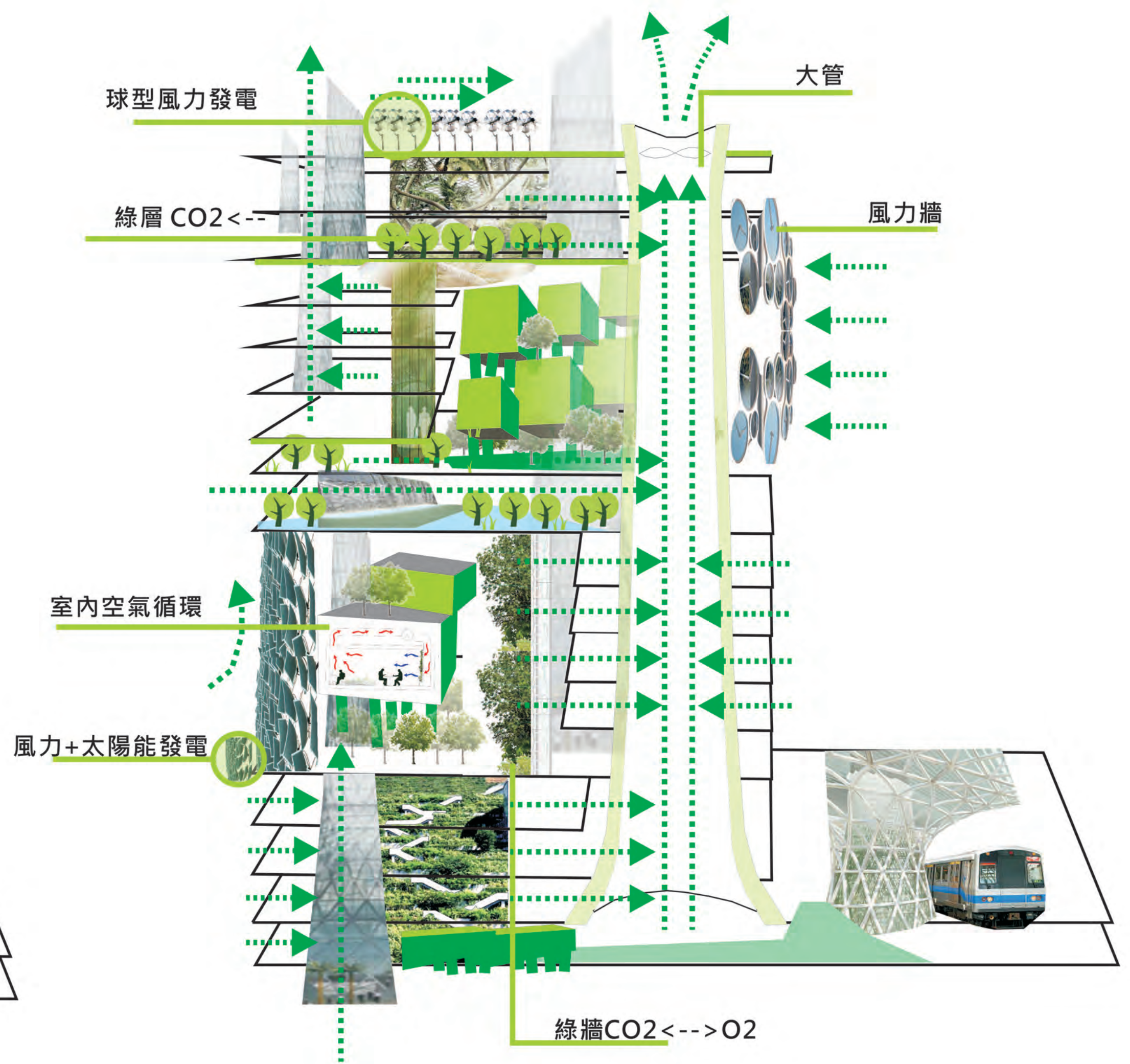
City Filter is a Polymer



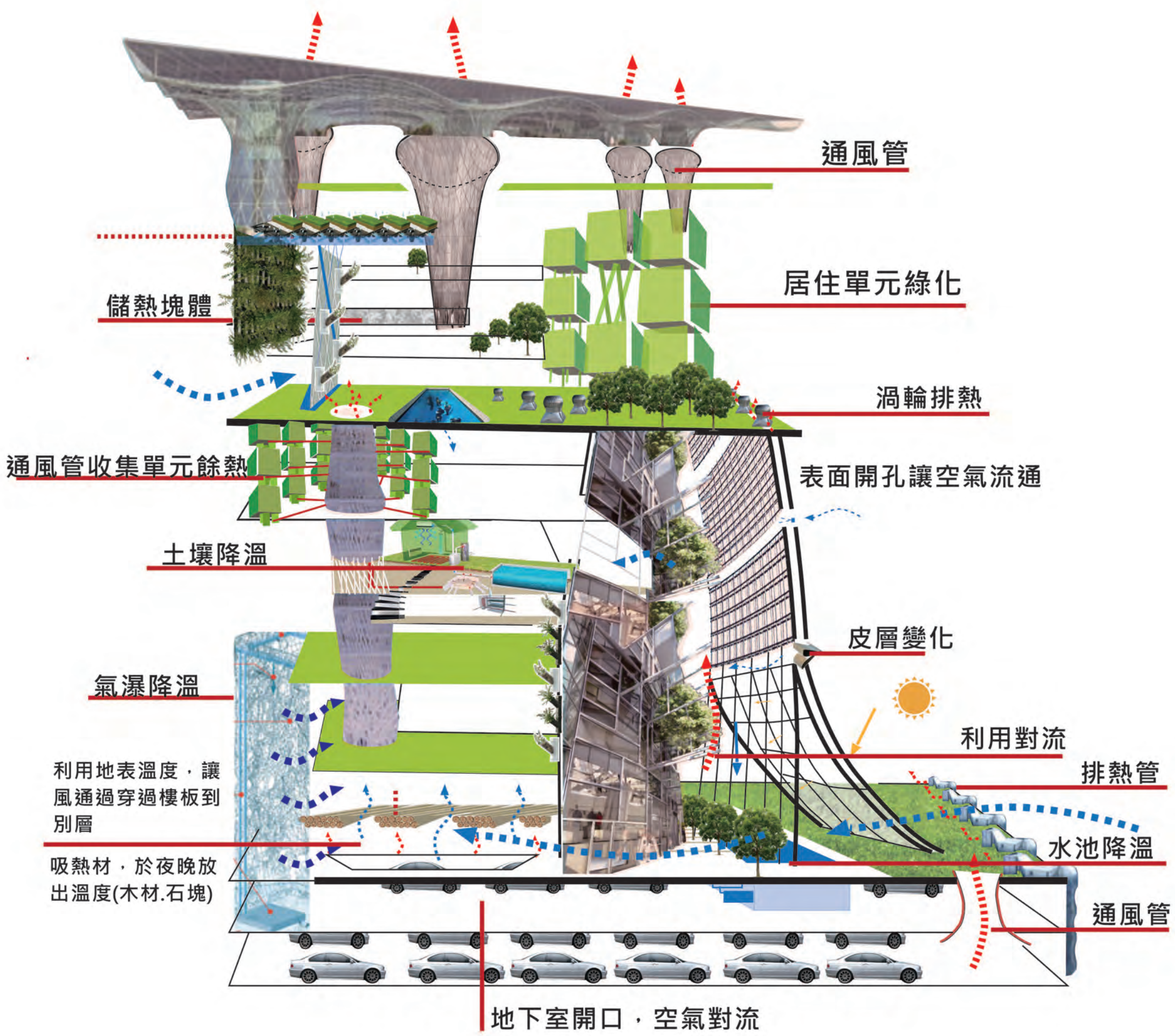
Filter In Life



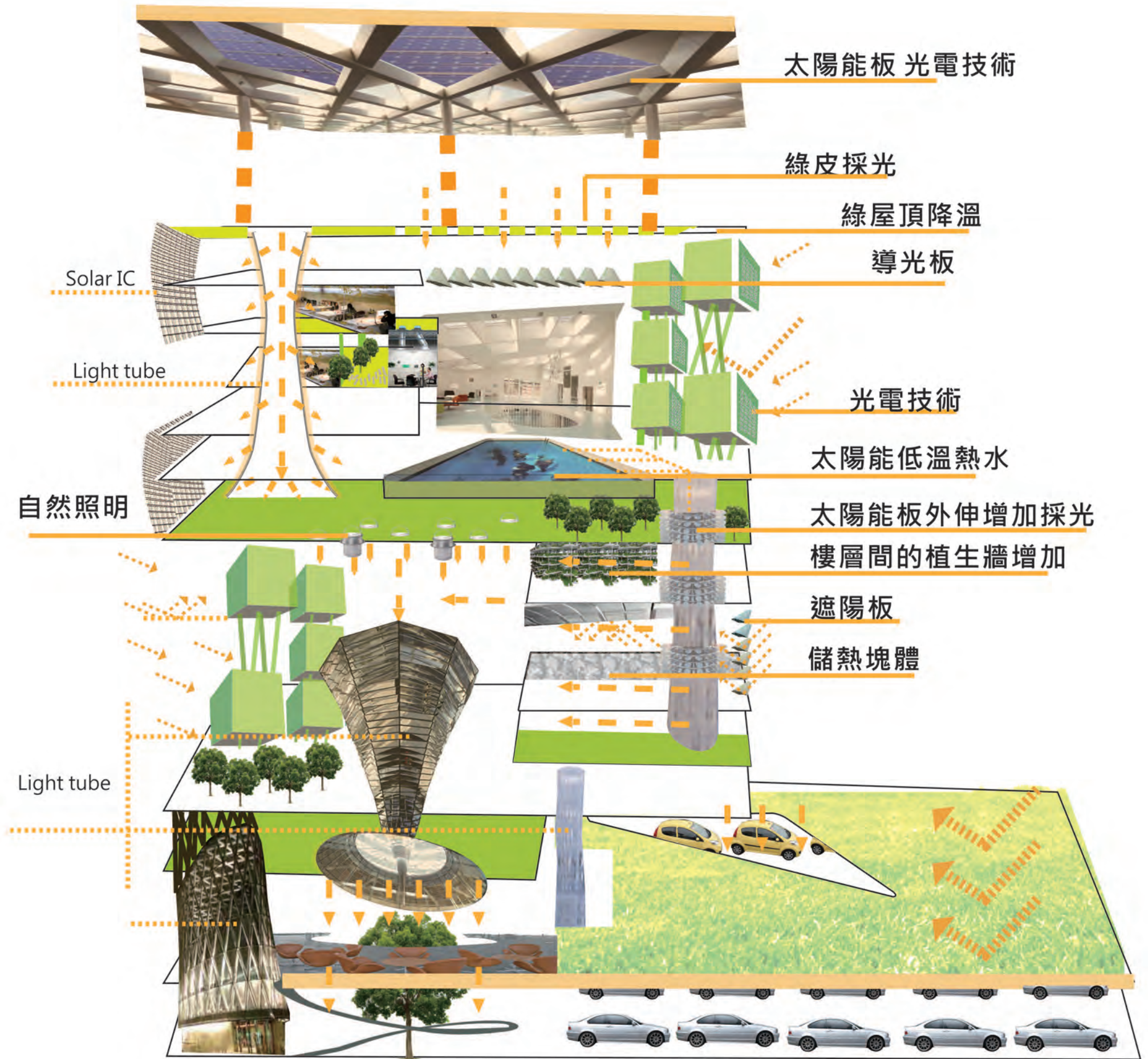
[Water]



[Air]



[Heat]



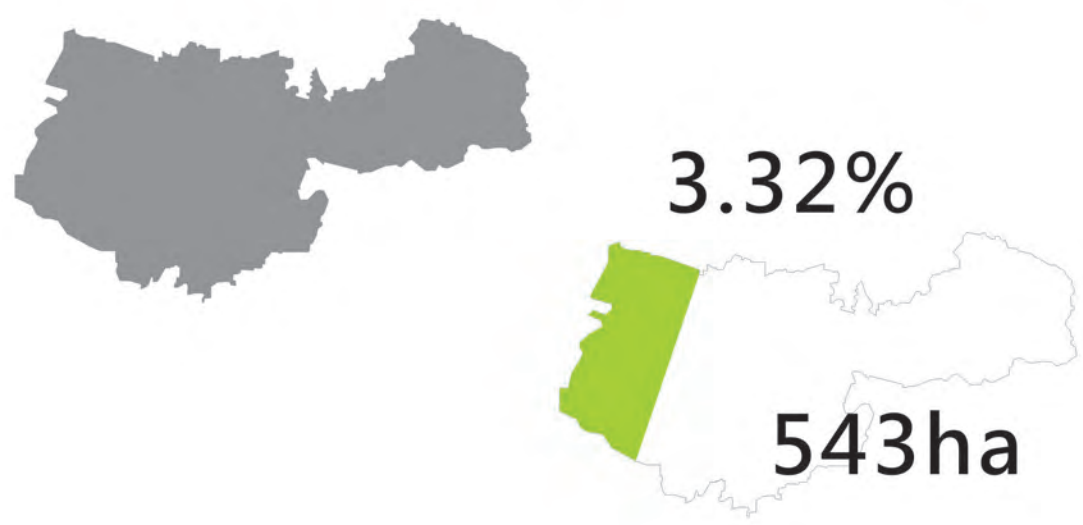
[Light]



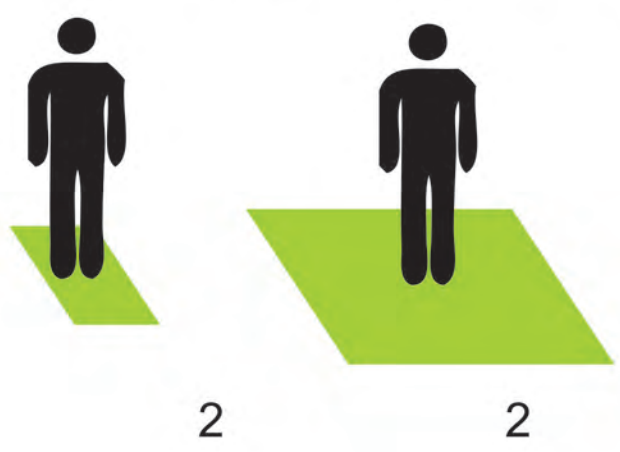
■ Concept

■ Lack of green space

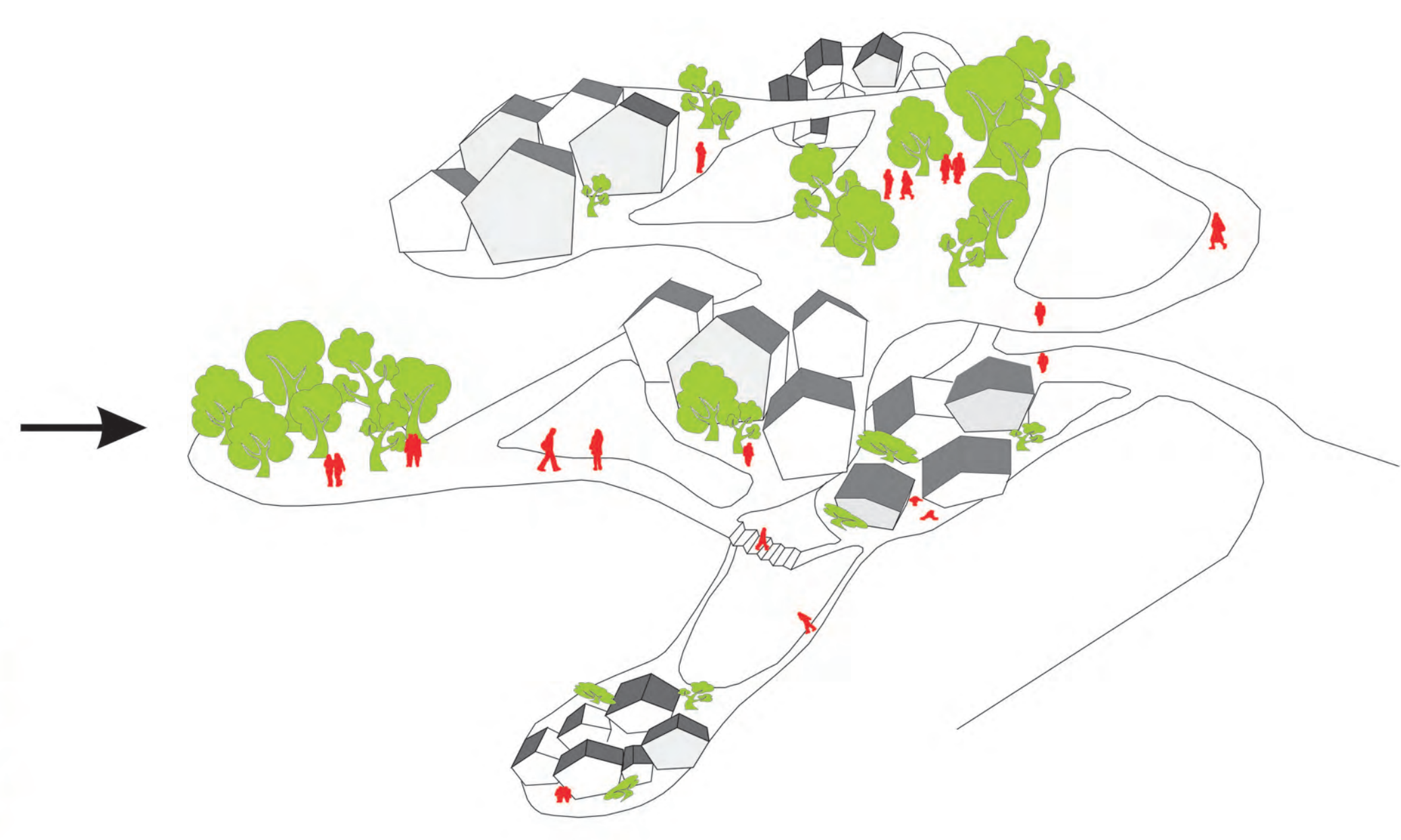
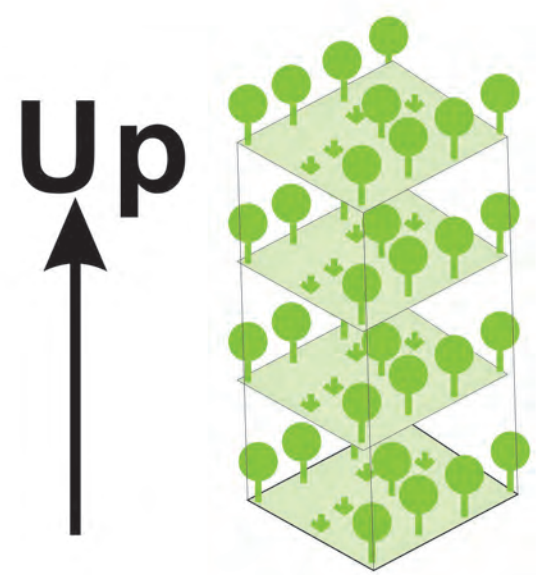
Ratio Green Cover in Taichung



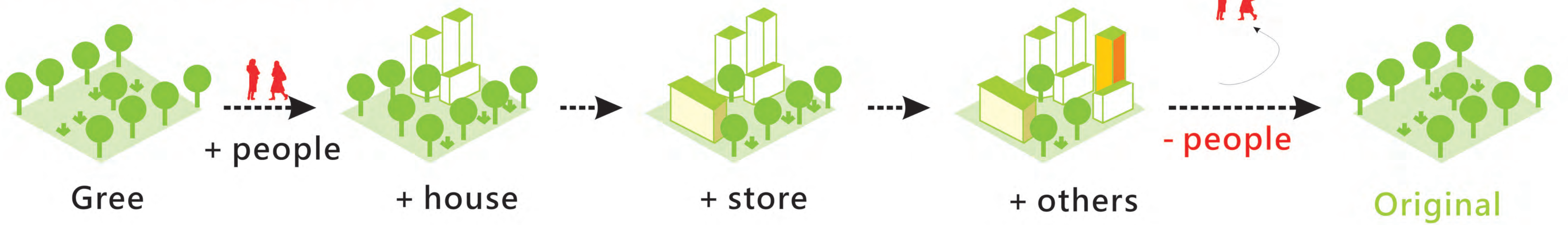
Taichung IUCN



■ Stack up "deck"

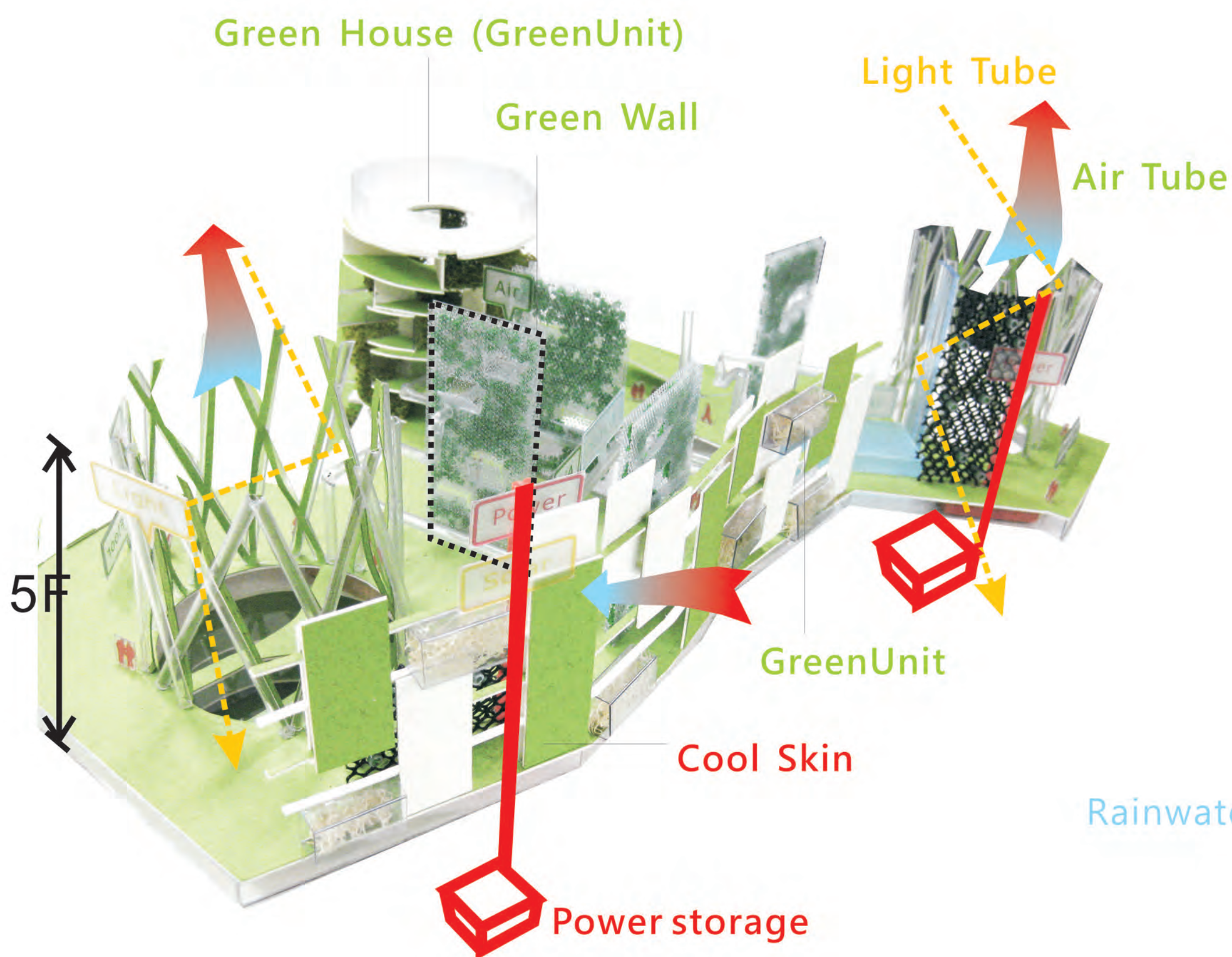


■ Cycle of Building Life



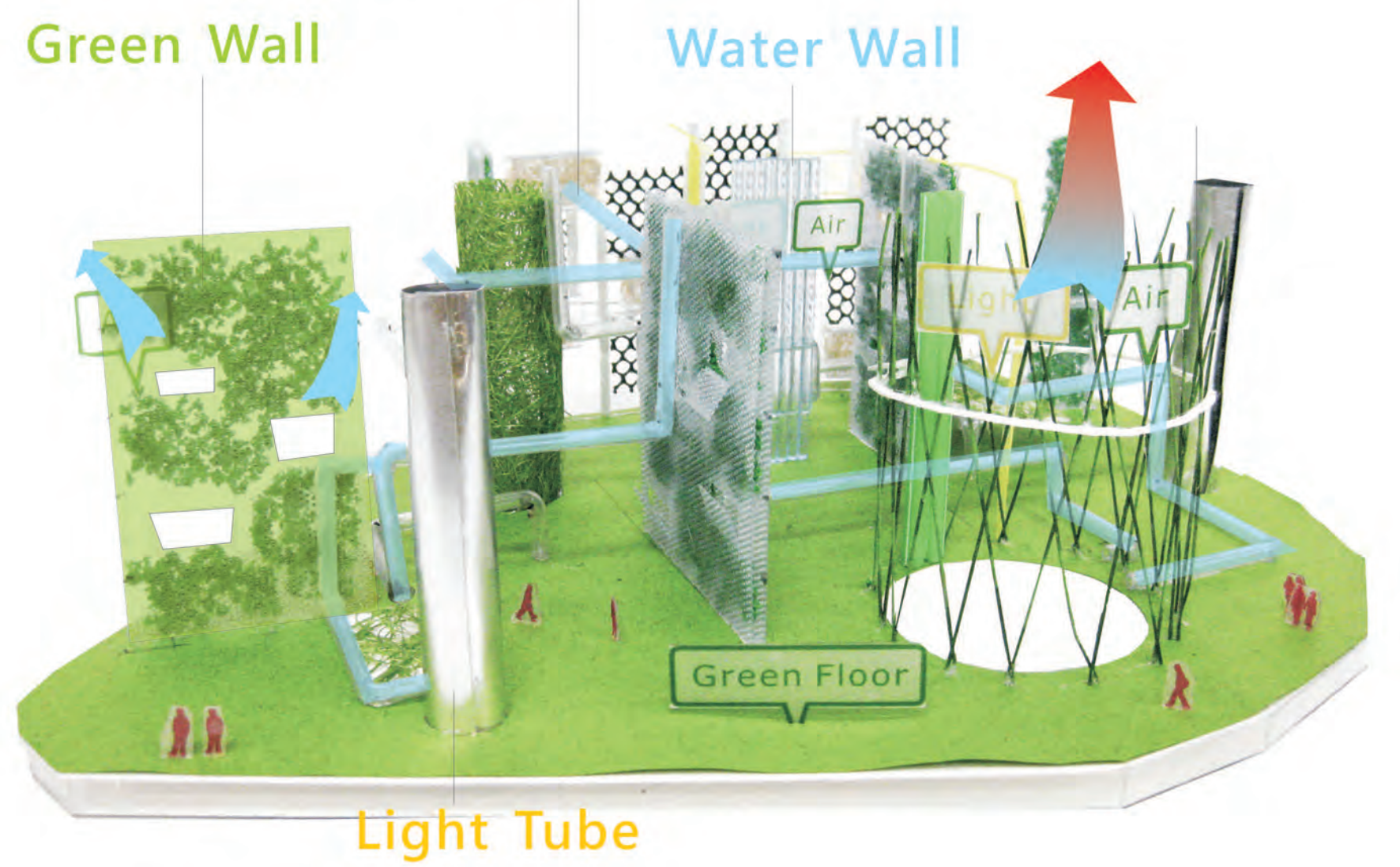
■ Component in Building

■ House + Office Normal



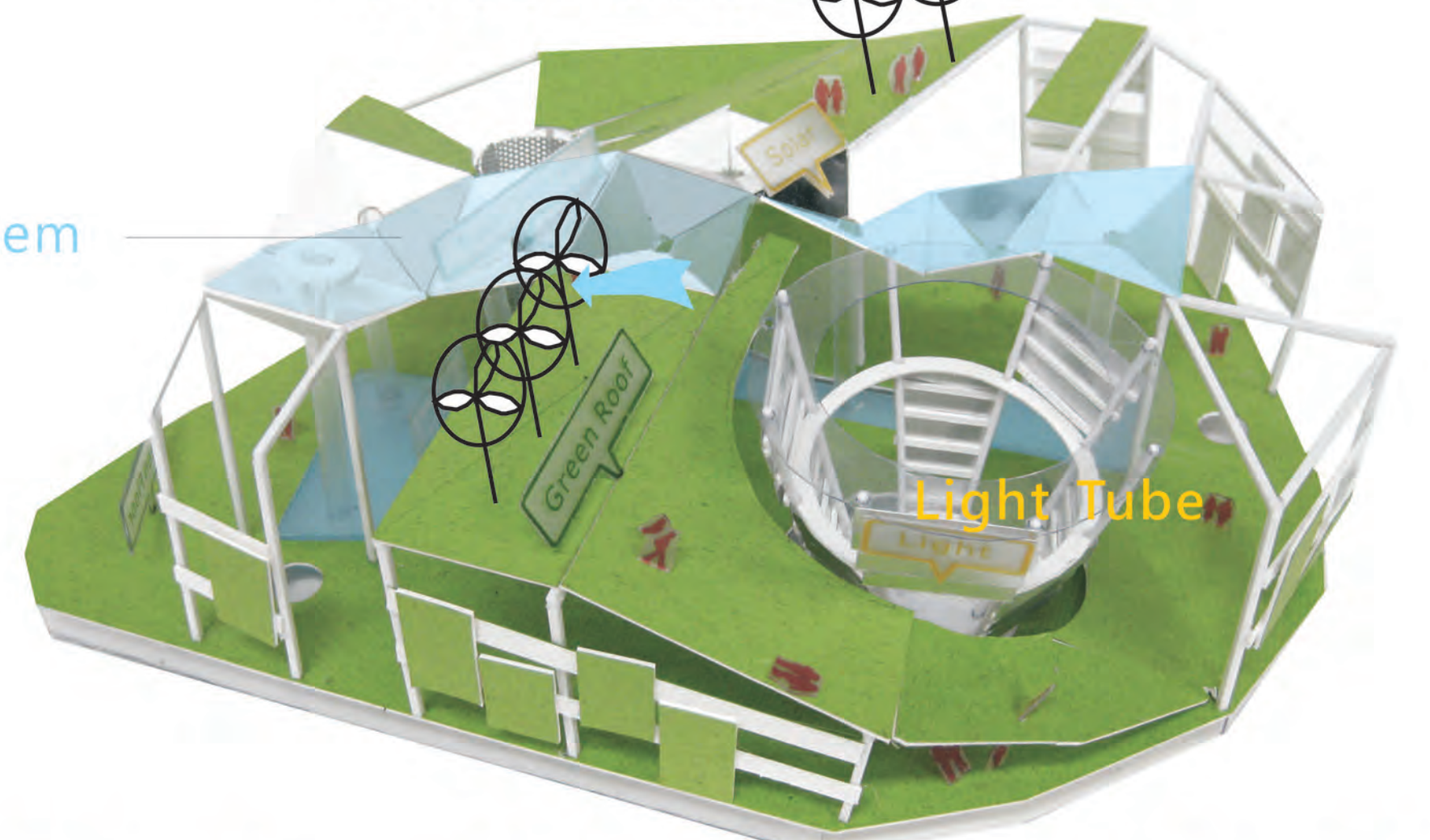
■ House Normal Deck

Water + Air Tube

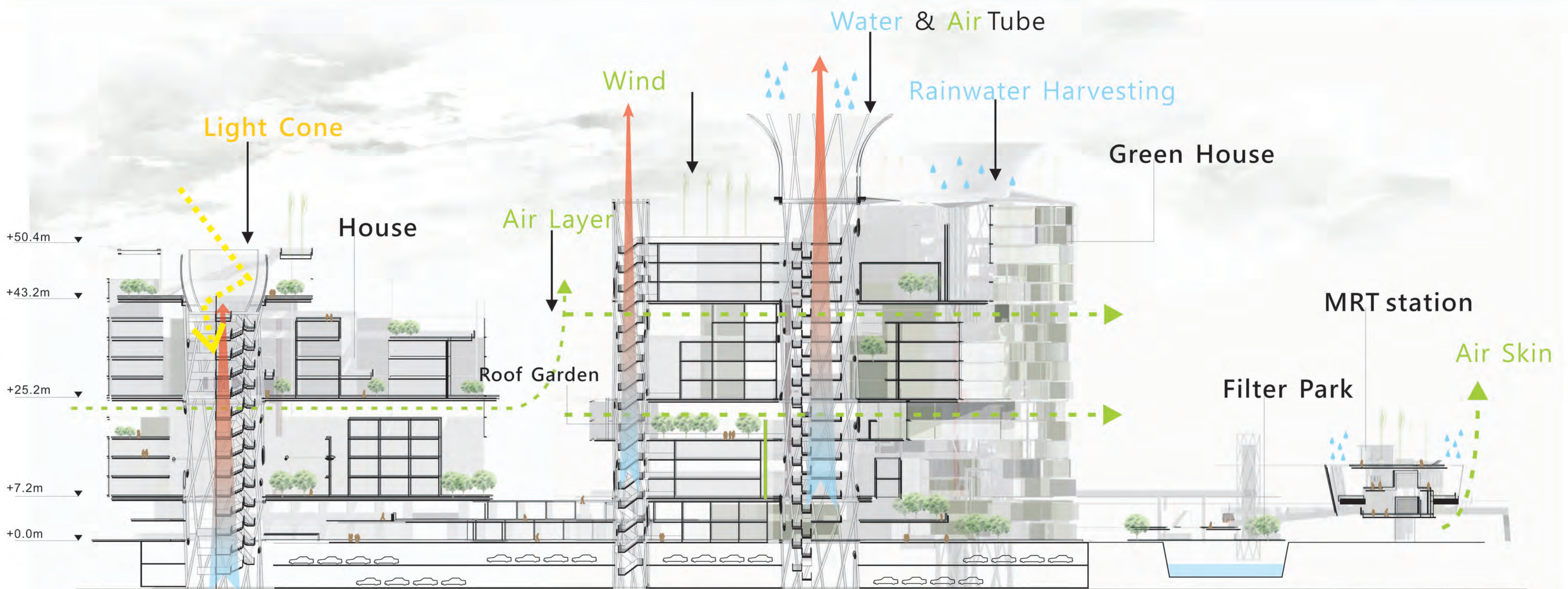


■ Roof Normal Deck

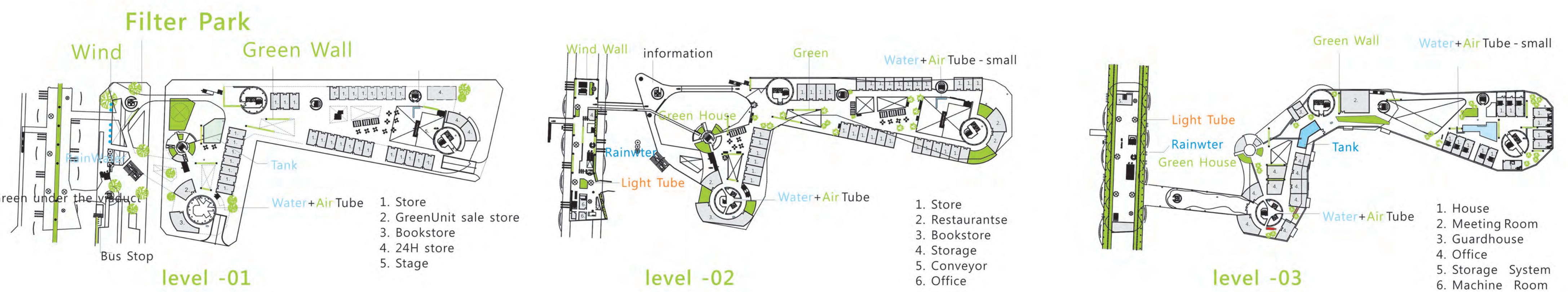
Wind Generator



Section

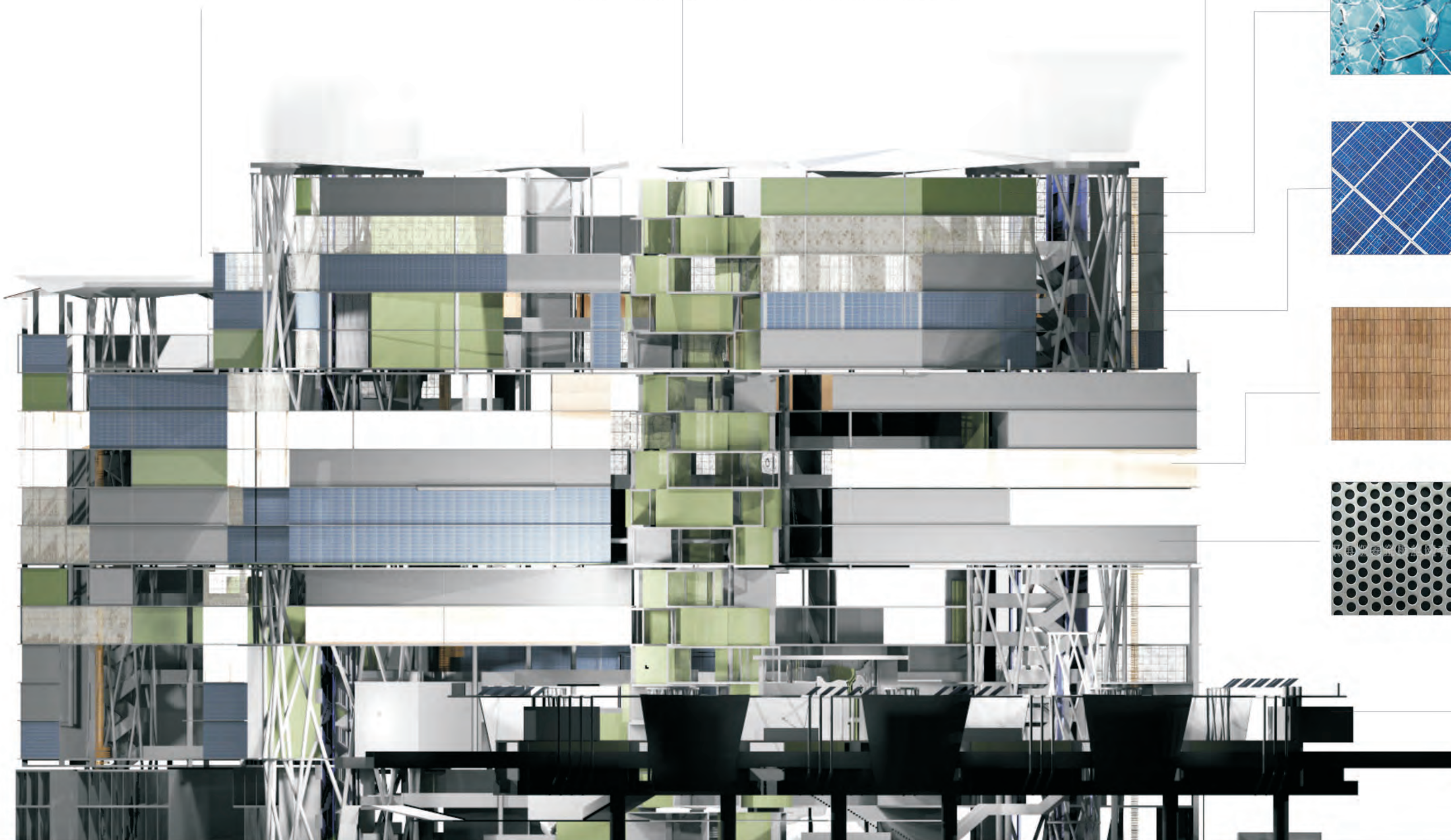


Plan



Elevation

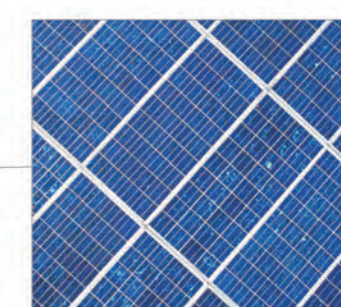
Green House



Green wall



Solar IC



Solar Panels



Bamboo (prevent heat)

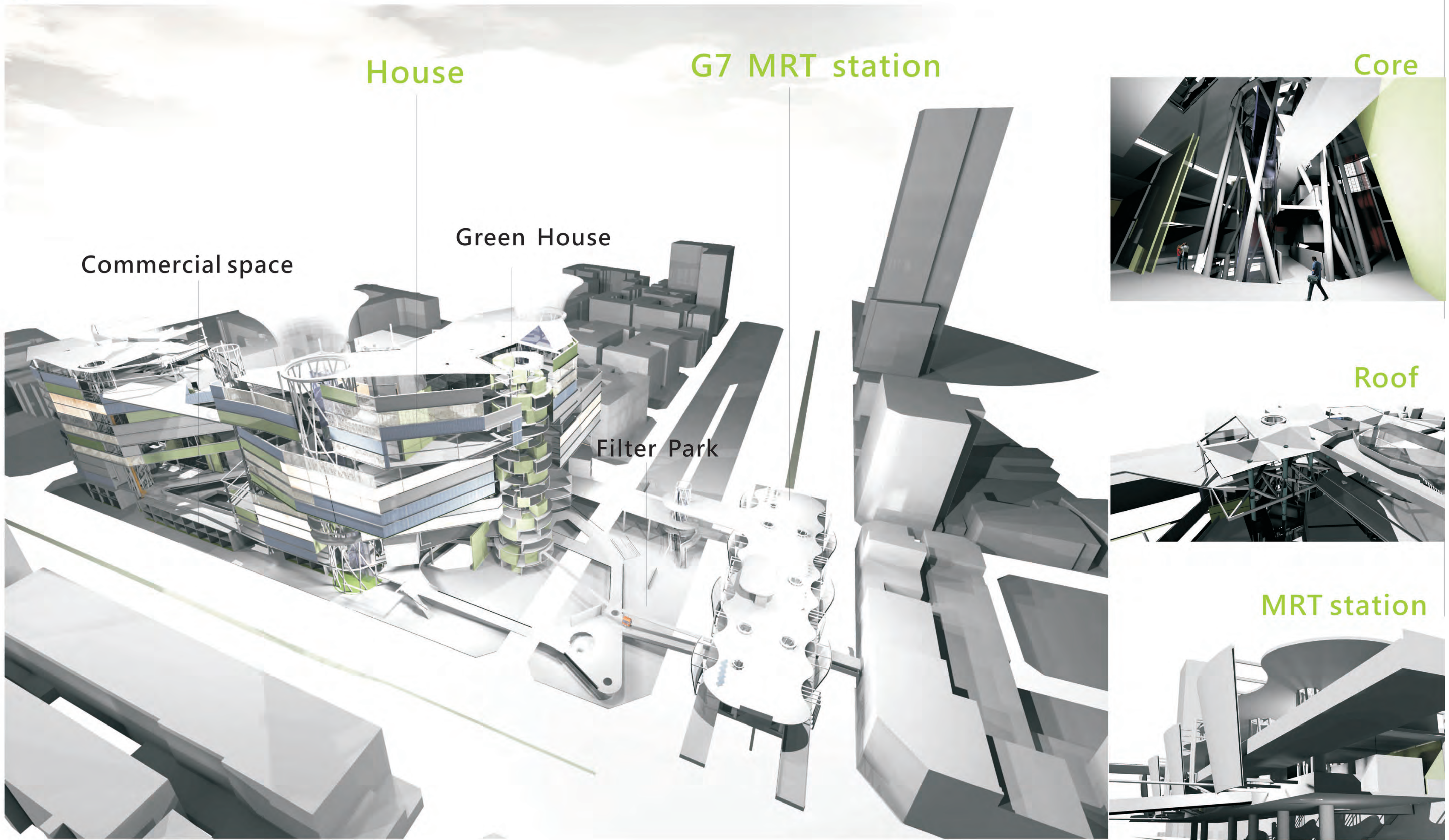


Noise

MRT Station

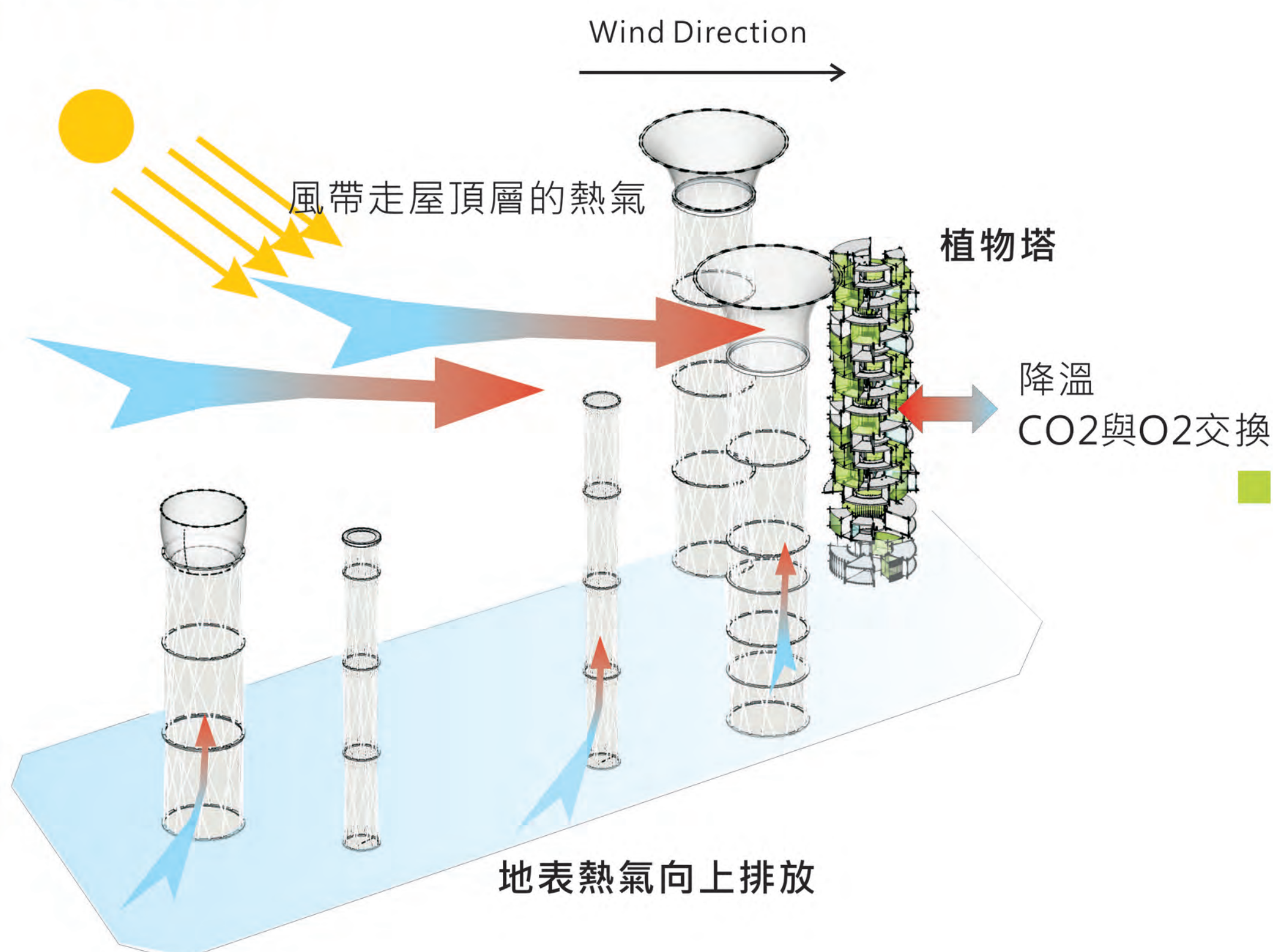


Perspecti



Component & System ■ Night

■ Day time



■ Light

